

VITTORIO
COLLECTION

All rights reserved. No part of this publication may be reproduced, stored in a retrieval system, or transmitted in any form or by any means, electronic, mechanical, photocopying, recording or otherwise, without prior written consent of LSI Stone.



Vittorio Collection is here to preserve the legacy of LSI while bringing a fresh vision, where modernity and contemporary trends meet history and natural resources. Shaping a new era of timeless design and craftsmanship.

Precision and quality define every element, resulting in furniture and pieces designed to enhance and transform your space.

PURE *AUTHENTIC*

THE AESTHETIC OF NATURAL MATERIALS

Beyond their visual impact, decorative stone pieces offer durability and a lasting presence. They age gracefully, often becoming more beautiful overtime.

As a natural and sustainable material, stone aligns with contemporary values of authenticity and conscious living. Whether in minimalist, rustic, or luxurious settings, natural stone decor elevates interiors with a quiet sophistication that only nature can provide.

The beauty of natural stone lies in its versatility and luxurious appeal. In interior spaces, decorative stone pieces serve not only as functional elements but also as striking focal points. Whether it's a sculpted centerpiece, a stone vase, or a textured wall panel, each piece brings a sense of timeless elegance and natural charm.

The unique textures, tones, and patterns found in stone add depth and character, making every environment feel curated and refined.

We invite you to immerse yourself into Vittorio collection and get to know our latest creations, including the sculptural Milla, the radiant Noturna Bianco, and the innovative lúmen pouffs.

Since natural stone is inherently immune to the passage of time, our designs effortlessly with stand trends and adapt seamlessly to a great variety of interior styles. So whether your vision calls for bold lavishness or the purity of minimalism, you will surely find the luxury piece that reflects your identity within this collection.

Because every slab of stone dictates its own narrative through unique veining and textures, we ensure that no two pieces are ever the same. We invite you to order your tailored creation, knowing that you are acquiring far more than furniture, you are collecting an unrepeatabeable fragment of nature.



WHAT DRIVE US?

We live in a world driven by speed, excess, and constant noise. At Vittorio, we choose something different.

Stone, a natural resource that has existed since the dawn of time, carries a story that no technology can replicate. Each vein, each texture, and every imperfection is a mark of time itself.

We chose stone as a partner in creation. Each piece is carefully designed while respecting the identity of the material. Every stone is unique, no slab is ever the same, which makes each piece even more unmatched.

Vittorio is about creating a relationship between people, spaces, and materials. We are guided by the heritage and legacy of LSI, combining discipline and innovation, where complexity exists beneath the surface.

Vittorio is not about producing more. It is about giving new life to what already exists. From large statement pieces to a line of smaller accessories, every creation has its purpose. Vittorio was born with the ambition to slow things down, to bring meaning back into objects, and to create spaces that feel, not just impress.

This is the new life of luxury: true meaning, true understanding.

Timeless. Conscious. Experiential.

Luxury is about true experiences, true connections. Understanding the material, the know-how, and the craft behind the brand and its pieces. And Vittorio is here to show exactly that.





HOW WAS VITTORIO BORN?

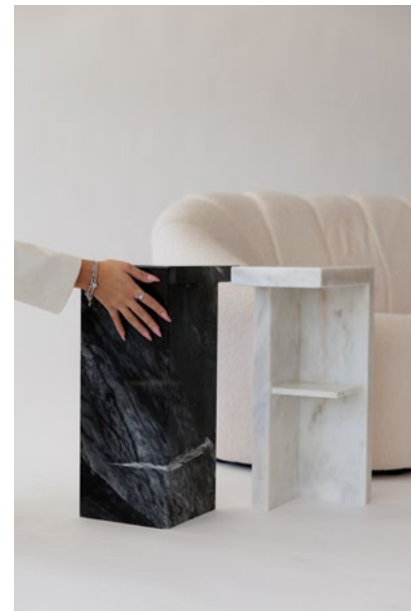
Vittorio wasn't "born" in the traditional sense, was created from an idea shaped by observation, creativity, and a shift in perspective within LSI Stone. By late 2024, the founder, Maria, began creating Vittorio by experimenting with different materials and the stones she found in the factory.

The remnants she constantly came across inspired her to create something from them. Instead of seeing waste, she saw potential, transforming her ideas into unique pieces.

Throughout 2025, the idea evolved, Designs were explored and refined, craftsmanship techniques were tested, the brand identity was developed, and so the first pieces gained life.

By 2026, Vittorio Collection had officially launched with a clear philosophy: luxury is not defined by excess, but by rarity and meaning. Every material is unique, and no two pieces are ever the same. At its core, Vittorio represents the fusion of LSI Stone's technical expertise and innovation with the natural uniqueness of stone, guided by a creative vision that celebrates imperfection, individuality, and sustainability.

So Vittorio was born not from raw creation but from reimagining what already existed, turning overlooked fragments into one-of-a-kind design pieces with their own identity and story.





WHAT VITTORIO *COLLECTION STANDS FOR*

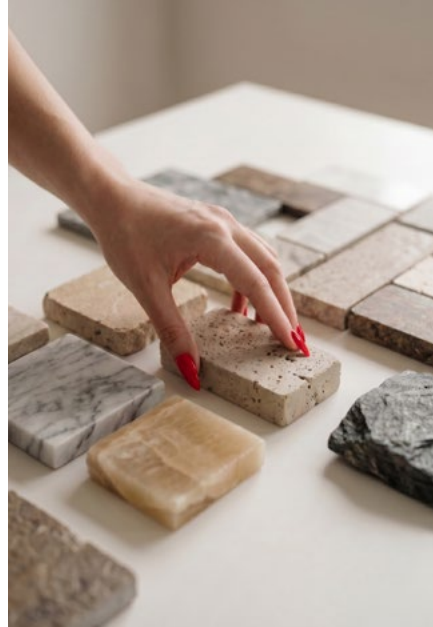
PURPOSE

INNOVATION

SUSTAINABILITY

SAVOIR FAIRE

ATTENTION TO DETAIL



Our first collection is where design meets functionality, sustainability, and craftsmanship. We carefully sourced some of the most unique slabs to create truly one-of-a-kind pieces for this collection. Our furniture tells a story of new beginnings, rooted in the belief that materials deserve a second chance.

We create Furniture crafted with purpose, designed to last and carry a story. With LSI's expertise and years of experience in the stone industry, we combine deep industry knowledge with the latest technology to craft exceptional pieces tailored to our clients' needs.

We are here to bring the interior of your dreams to life.



*A NEW MARKET
SAME ESSENCE*

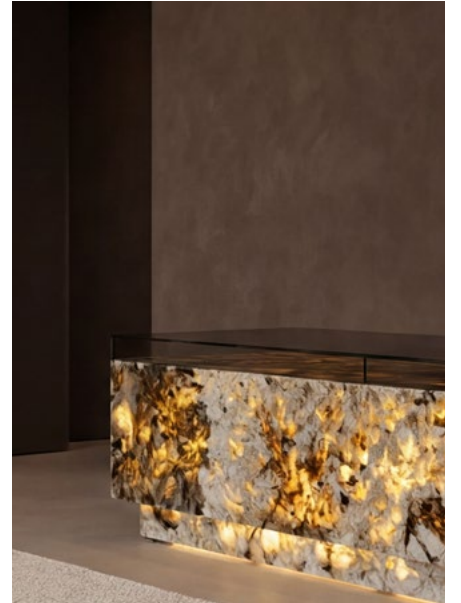
Vittorio challenges LSI to embrace new horizons. Inspired by the world of design and exclusive furniture, it opens the door to fresh perspectives, redefines conventions, and explores the true potential of design. Built upon the same principles and values that define LSI, Vittorio remains committed to what matters most: an uncompromising client experience, exceptional know-how, refined craftsmanship, and a continuous pursuit of excellence.



THE *COLLECTION*

This collection reimagines stone beyond its conventional function, transforming it into a medium of artistic expression, atmosphere, and contemporary design. Celebrating the natural beauty of its veining, textures, and organic patterns, each piece is intentionally unique, revealing the individuality and character that only natural stone can offer. Composed by a diverse collection of sculptural tables, illuminated pouffs, a playful ping pong table, and a curated line of home accessories, the collection explores the harmonious relationship between material, light, and form. Warm lighting interacts delicately with translucent surfaces, enhancing the depth and richness of stone while creating sophisticated ambiance.

Balancing functionality with artistry, each piece was designed to seamlessly integrate into contemporary interiors while maintaining a strong sculptural identity. More than a collection, it is a celebration of conscious design, where stone is elevated beyond utility and transformed into objects of atmosphere, emotion, and enduring presence.



MILLA | *SIDE TABLE*

S: L 300 x W 200 x H 500 mm

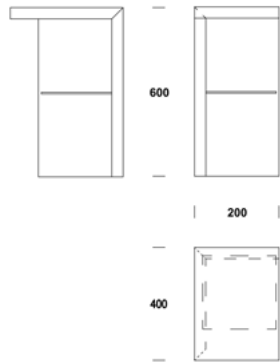
M: L 400 x W 200 x H 600 mm

MILLA

Embodies the essence of conscious minimalism, a piece designed with simplicity, versatility, and timeless elegance in mind. Defined by its clean lines and balanced proportions, it seamlessly adapts to any environment and lifestyle, functioning effortlessly as a bedside table, a refined side piece, or a subtle decorative accent within contemporary interiors.



MILLA | *SIDE TABLE*
S: L 300 x W 200 x H 500 mm
M: L 400 x W 200 x H 600 mm



Crafted in natural stone, each version reveals its own unique identity through distinctive veining, textures, and tonal depth.

ORIANNA | *CENTER TABLE*
L 1085 x W 700 x H 350 mm

ORIANNA

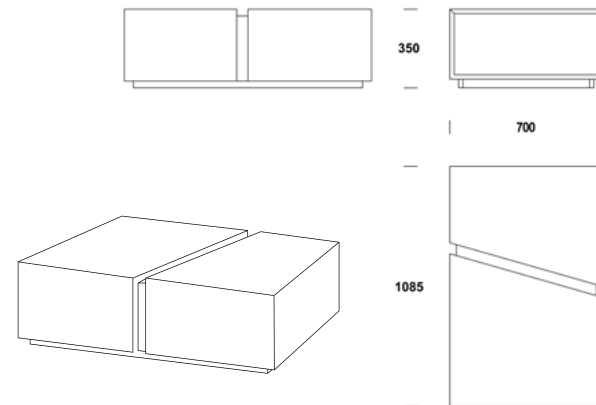
Elegant, architectural, and effortlessly modern, this center table reflects a timeless approach to design where strong forms, precise lines, and understated luxury coexist in perfect harmony.

Defined by its elongated rectangular silhouette and striking diagonal cut through the center, the piece creates a dynamic visual composition that plays effortlessly with balance, proportion, and perspective.

Inspired by contemporary architecture, the design explores the interaction of angles and clean lines, transforming a functional object into a sculptural statement. The diagonal opening introduces depth and movement to the piece, breaking the rigidity of the form while adding a sense of lightness and modernity.



ORIANNA | *CENTER TABLE*
L 1085 x W 700 x H 350 mm



LUNÉA | *ONYX DISPLAY TABLE*
L 800 x W 533 x H 300 mm

LUNÉA

A sculptural expression of transformation, where craftsmanship and innovation come together to give new life to what was once considered lost. Featuring an illuminated interior drawer concealed beneath a refined glass top, the piece transforms functionality into an elegant visual experience, allowing treasured objects to become part of the design itself.

Created from a fractured green onyx slab that had broken into multiple pieces, Lunéa was born through a meticulous reconstruction process. Each fragment was carefully preserved and reassembled using fine resin detailing, turning imperfection into a defining element of the piece. Rather than concealing its history, the table celebrates it. Highlighting the natural beauty, depth, and character of the stone.

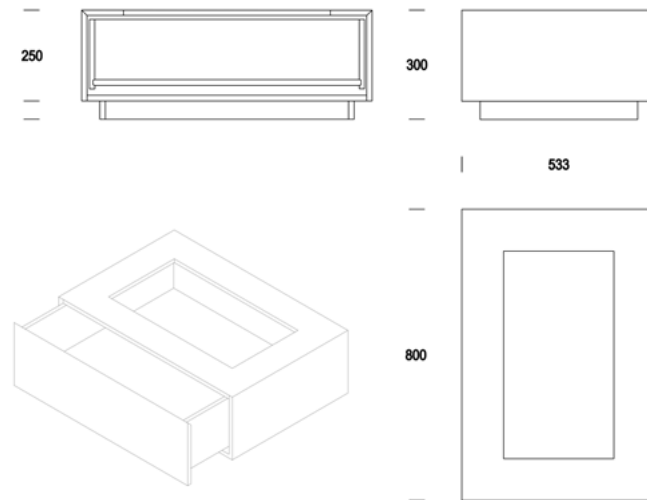
Soft interior lighting enhances the translucent qualities of the onyx, creating an atmospheric glow that reveals every vein, texture, and intricate composition. The result is a table that feels both contemporary and timeless: minimalist in form, yet deeply rich in narrative.

Lunéa embodies the idea that true luxury lies not in excess, but in rarity, artistry, and the ability to transform fragility into enduring beauty.



LUNÉA | *ONYX DISPLAY TABLE*
L 800 x W 533 x H 300 mm

VITTORIO COLLECTION



NOTTURNA NERO | *SIDEBOARD*
L 1800 x W 525 x H 550 mm

NOTTURNA NERO

Designed for those who seek modernity through practical, youthful, yet undeniably luxurious pieces.

A refined balance between functionality and sophistication, it reflects the timeless identity of Vittorio Collection.

Crafted from two noble materials, premium marble and walnut wood. The piece celebrates the contrast between natural textures and contemporary design. The marble exterior highlights the uniqueness of the stone, with its distinctive veining and elegant presence, while the warm walnut interior introduces both comfort and practicality.

Thoughtfully designed with three interior shelves and versatile storage solutions, the sideboard offers everyday functionality without compromising aesthetics. Minimalist yet expressive, practical yet refined, it becomes more than a storage piece it is a statement of understated luxury and modern living.



NOTTURNA NERO | *SIDEBOARD*
L 1800 x W 525 x H 550 mm

VITTORIO COLLECTION



OMBRA LUNARE | TABLE
L 1800 x W 700 x H 600 mm

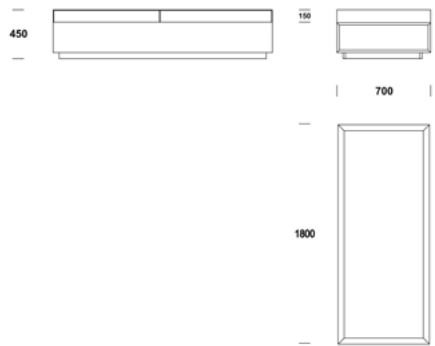
OMBRA LUNARE

Evoking refined contemporary living, defined by a generous rectangular silhouette and refined architectural presence. This piece is crafted in exquisite Alpinus quartzite which reveals delicate crystal-like veining that subtly interacts with light, enhancing the natural depth and purity of the material. Its polished, glossy finish further elevates the surface, creating a sophisticated dialogue between texture, reflection, and translucency.

At its core, a soft warm retro-illuminated glow transforms the table into more than a functional object it becomes an atmospheric centerpiece. The golden interior lighting gently radiates through the stone, emphasizing its translucent qualities while bringing a sense of warmth, comfort, and understated opulence to the surrounding space. The contrast between alpinus quartzite and warm ambient light creates an harmonious balance between modern minimalism and elegance.



OMBRA LUNARE | TABLE
L 1800 x W 700 x H 600 mm



LUMÉN | *POUFFS*

S: L 500 x W 500 x H 450 mm

L: L 865 x W 865 x H 450mm

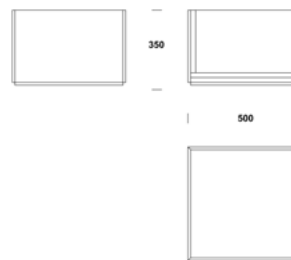
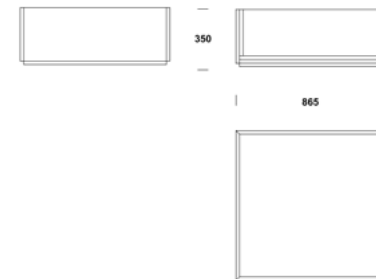
LUMÉN

Here to go beyond conventional design, transforming stone remnants into sculptural pieces with a renewed purpose. Crafted using authentic stone remains from the landmark project Perelman Performing Arts Center (PAC NYC), manufactured by LSI Stone, these pieces embody the beauty of reinvention.

Born from the scale and ambition of the project, the remaining stone revealed an unexpected opportunity: to create objects where light and natural material coexist in harmony. Lumén pouffs highlight the delicate crystalline veining of the stone, allowing light to softly pass through and enhance its organic character.

Designed to adapt to different moods and spaces, the illumination can remain constantly on, transforming the piece into a sculptural light object, or activate only when in use, creating a more interactive experience.

Minimal yet expressive, the Lumén pouffs are perfectly suited for exclusive lobbies, sophisticated living rooms, and contemporary interiors seeking understated luxury and artistic presence.





PING PONG TABLE | *CENTERTABLE*

L 2740 x W 1600 x H 760 mm

PING PONG TABLE

Created from a spontaneous desire to bring more fun into design, this ping pong table transforms a common object into a playful statement. More than just a game table, the piece emerged from an exploration of stone itself, experimenting with unconventional cuts, irregular forms, and unexpected compositions to create something visually dynamic and entirely distinct from the traditional standards we are used to see.

Defined by its irregular tabletop silhouette, the design embraces asymmetry in a refined and contemporary way, allowing the natural beauty of the stone to interact with bold geometric freedom.

Minimal in aesthetic and finished in soft neutral tones, the table integrates naturally into contemporary interiors while maintaining a strong artistic identity. Its understated palette balances the expressive form, creating a piece that feels modern, relaxed, and timeless at once.

Designed for shared moments and meaningful experiences, this ping pong table becomes the perfect centerpiece for relaxed moments with friends where design, conversation, and play come together in a spontaneous and elegant atmosphere.



LAVA TABLE | *DINING TABLE*
L 2700 x W 1600 x H 750 mm

LAVA TABLE

An expression of fluidity and strength, where natural stone is transformed into a timeless architectural piece. Crafted from a single stone block, the design celebrates the authenticity and uniqueness of the material through soft organic curves, and a bold monolithic presence.

Its defining element lies in the sculptural solid base, an irregular and flowing form that creates a striking sense of movement beneath the perfectly balanced oval top. Inspired by natural erosion and organic silhouettes, the base introduces lightness and continuity to the stone, allowing the piece to feel both monumental and elegant at once.

Originally part of a long-preserved stone block within the factory, the material naturally found its expression through this table, giving new purpose to a remarkable piece of stone while maintaining its raw beauty and character intact.

Designed to become the centerpiece of meaningful gatherings, this dining table embodies effortless sophistication rooted in craftsmanship, rarity, and the enduring beauty of natural materials.





THE SUSTAINABLE *CORE OF VITTORIO*

From years of waste across every type of industry, the way people throw things away nowadays without care or adding value to them has become alarming. We live in an era of enormous supply, where almost anything is easily available, and this excess is getting out of control.

Sustainability has been a topic that has grown throughout the years, and even more so today. We are trying to become more conscious and reuse everything, but it remains difficult due to the vast amount of products we, as human beings, are constantly exposed to.

This brand is here to slowly introduce the reuse of remnants into the luxury business, where true value lies in consciousness, high quality, and the uniqueness of each piece.

When Vittorio speaks of remnants, we do not refer to something ugly or without worth. Our reused materials come from slabs that were broken and are revived through days of work with resin, or from slabs that could not be used for projects due to a small imperfection in a vein. Stone varies greatly and can be fragile, often breaking during manufacturing. When slabs are rejected, Vittorio saw an opportunity to preserve them and transform them into furniture pieces. The imperfection becomes perfection, and the pieces that come with scars make each creation even more unique, with a strong narrative. This is what Vittorio is built on: understanding, consciousness, real experiences, and genuine connections.



ABOUT THE FOUNDER

Maria is a young visionary driven by a deep passion for art, design, and the world of high-end. Through her journey, she found in LSI Stone an opportunity to bring these passions into a new niche where material, creativity, and storytelling meet.

She studied Business and Languages at the Universidade Católica Portuguesa, complementing her education with a semester abroad in Paris. This experience exposed her to the world of luxury, excellence in craftsmanship, and the importance of heritage and savoir-faire elements that would later shape her creative direction.

Maria officially joined LSI Stone in late September 2024, though her connection to the company began earlier. She had already gained hands-on experience working at international trade fairs such as Marmomac (2021 and 2023) and The Big 5 Dubai (2021). These experiences allowed her to develop strong skills in communication, client relations, and intercultural understanding, while deepening her knowledge of the product and the industry.

When she began working full-time at LSI, Maria discovered a new passion for design. Without formal training, she started sketching and developing pieces intuitively, guided by curiosity and creativity.

After a year of exploring design in her own way, she decided to refine her skills by enrolling in a furniture design course, balancing learning with her professional role. From a young age, Maria was always drawn to creating. Her favorite subjects always were visual and technological arts, and English, where she developed both her creative expression and her ability to communicate ideas. These interests once felt difficult to reconcile, but today she is shaping a path where they naturally come together, combining design with language and storytelling.

Now, she is deeply committed to communicating the story of Vittorio, sharing not only the collection itself but also the narrative behind each piece she creates. For Maria, stone is more than a material. She finds it inherently unique, with an unmatched natural beauty. Through Vittorio, she brings that uniqueness to life, giving each piece a voice, a story, and a new purpose.

HOW *TO ORDER*

Visit vittoriocollection.com for a perfect overview of our comprehensive collection, see your favorite piece, click, email us and we will contact you.

contact@vittoriocollection.com

